

Barre dentate HTD® / HTD® Standard toothed bars

HTD® Standard Zahnriemenstangen / Barreaux dentés standard HTD®

Barras dentadas de serie HTD®

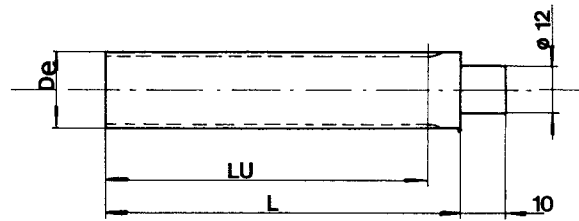
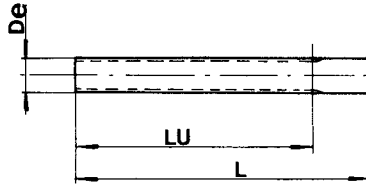
Materiale:
alluminio 6082 T6
UNI 9006/4 adatto al
trattamento anodico

Material:
aluminium 6082 T6
UNI 9006/4 suitable for
anodic treatment

Werkstoff:
aluminium 6082 T6
UNI 9006/4 geeignet für
anodischen oxydation

Matière:
aluminium 6082 T6
UNI 9006/4 apte au
traitement anodique

Material:
aluminio 6082 T6
UNI 9006/4 apto para la
oxidacion anodica



HTD® 3M

| Codice Code symbol Fabriknummer Code symbole Numero de fabrica | Nostro codice Our code Unser kode Notre code Nuestro codigo | N. denti N. of teeth Zahnezahl N. bre de dents Cantidad de dientes | Dp | De | Lu | L |
|--|---|--|-------|-------|-----|-----|
| 9 3M | B03M009 | 9 | 8,59 | 7,83 | 75 | 100 |
| 10 3M | B03M010 | 10 | 9,55 | 8,79 | 75 | 100 |
| 11 3M | B03M011 | 11 | 10,50 | 9,74 | 75 | 100 |
| 12 3M | B03M012 | 12 | 11,46 | 10,70 | 100 | 125 |
| 13 3M | B03M013 | 13 | 12,41 | 11,65 | 100 | 125 |
| 14 3M | B03M014 | 14 | 13,37 | 12,61 | 100 | 125 |
| 15 3M | B03M015 | 15 | 14,32 | 13,56 | 100 | 125 |
| 16 3M | B03M016 | 16 | 15,28 | 14,52 | 125 | 155 |
| 17 3M | B03M017 | 17 | 16,23 | 15,47 | 125 | 155 |
| 18 3M | B03M018 | 18 | 17,19 | 16,43 | 125 | 155 |
| 19 3M | B03M019 | 19 | 18,14 | 17,38 | 125 | 155 |
| 20 3M | B03M020 | 20 | 19,10 | 18,34 | 150 | 165 |
| 21 3M | B03M021 | 21 | 20,05 | 19,29 | 150 | 165 |
| 22 3M | B03M022 | 22 | 21,01 | 20,25 | 150 | 165 |
| 23 3M | B03M023 | 23 | 21,96 | 21,20 | 150 | 165 |
| 24 3M | B03M024 | 24 | 22,92 | 22,16 | 150 | 165 |
| 25 3M | B03M025 | 25 | 23,87 | 23,11 | 150 | 165 |
| 26 3M | B03M026 | 26 | 24,83 | 24,07 | 150 | 165 |
| 27 3M | B03M027 | 27 | 25,78 | 25,02 | 150 | 165 |
| 28 3M | B03M028 | 28 | 26,74 | 25,98 | 150 | 165 |
| 29 3M | B03M029 | 29 | 27,69 | 26,93 | 150 | 165 |
| 30 3M | B03M030 | 30 | 28,65 | 27,89 | 175 | 183 |
| 31 3M | B03M031 | 31 | 29,60 | 28,84 | 175 | 183 |
| 32 3M | B03M032 | 32 | 30,56 | 29,80 | 175 | 183 |
| 33 3M | B03M033 | 33 | 31,54 | 30,75 | 175 | 183 |
| 34 3M | B03M034 | 34 | 32,47 | 31,71 | 175 | 183 |
| 35 3M | B03M035 | 35 | 33,42 | 32,66 | 175 | 183 |
| 36 3M | B03M036 | 36 | 34,38 | 33,62 | 200 | 200 |
| 37 3M | B03M037 | 37 | 35,33 | 34,57 | 200 | 200 |
| 38 3M | B03M038 | 38 | 36,29 | 35,53 | 200 | 200 |
| 39 3M | B03M039 | 39 | 37,24 | 36,48 | 200 | 200 |
| 40 3M | B03M040 | 40 | 38,20 | 37,44 | 200 | 200 |
| 42 3M | B03M042 | 42 | 40,11 | 39,34 | 200 | 200 |
| 44 3M | B03M044 | 44 | 42,02 | 41,26 | 200 | 200 |
| 45 3M | B03M045 | 45 | 42,97 | 42,21 | 200 | 200 |
| 48 3M | B03M048 | 48 | 45,84 | 45,08 | 200 | 200 |
| 50 3M | B03M050 | 50 | 47,75 | 46,99 | 200 | 200 |
| 52 3M | B03M052 | 52 | 49,66 | 48,90 | 200 | 200 |
| 54 3M | B03M054 | 54 | 51,57 | 50,81 | 200 | 200 |
| 56 3M | B03M056 | 56 | 53,48 | 52,72 | 200 | 200 |
| 60 3M | B03M060 | 60 | 57,30 | 56,54 | 200 | 200 |
| 62 3M | B03M062 | 62 | 59,21 | 58,45 | 200 | 200 |
| 64 3M | B03M064 | 64 | 61,12 | 60,36 | 200 | 200 |
| 66 3M | B03M066 | 66 | 63,03 | 62,27 | 200 | 200 |
| 68 3M | B03M068 | 68 | 64,94 | 64,18 | 200 | 200 |
| 70 3M | B03M070 | 70 | 66,85 | 66,09 | 200 | 200 |
| 72 3M | B03M072 | 72 | 68,75 | 67,99 | 200 | 200 |

HTD® 5M

| Codice Code symbol Fabriknummer Code symbole Numero de fabrica | Nostro codice Our code Unser kode Notre code Nuestro codigo | N. denti N. of teeth Zahnezahl N. bre de dents Cantidad de dientes | Dp | De | Lu | L |
|--|---|--|--------|--------|-----|-----|
| 12 - 5M | B05M012 | 12 | 19,10 | 17,96 | 150 | 165 |
| 13 - 5M | B05M013 | 13 | 20,69 | 19,55 | 150 | 165 |
| 14 - 5M | B05M014 | 14 | 22,28 | 21,14 | 175 | 183 |
| 15 - 5M | B05M015 | 15 | 23,87 | 22,73 | 175 | 183 |
| 16 - 5M | B05M016 | 16 | 25,46 | 24,32 | 175 | 183 |
| 17 - 5M | B05M017 | 17 | 27,06 | 25,92 | 175 | 183 |
| 18 - 5M | B05M018 | 18 | 28,65 | 27,51 | 200 | 200 |
| 19 - 5M | B05M019 | 19 | 30,24 | 29,10 | 200 | 200 |
| 20 - 5M | B05M020 | 20 | 31,83 | 30,69 | 200 | 200 |
| 21 - 5M | B05M021 | 21 | 33,42 | 32,28 | 200 | 200 |
| 22 - 5M | B05M022 | 22 | 35,01 | 33,87 | 200 | 200 |
| 23 - 5M | B05M023 | 23 | 36,61 | 35,47 | 200 | 200 |
| 24 - 5M | B05M024 | 24 | 38,20 | 37,06 | 200 | 200 |
| 25 - 5M | B05M025 | 25 | 39,79 | 38,65 | 200 | 200 |
| 26 - 5M | B05M026 | 26 | 41,38 | 40,24 | 200 | 200 |
| 27 - 5M | B05M027 | 27 | 42,97 | 41,83 | 200 | 200 |
| 28 - 5M | B05M028 | 28 | 44,56 | 43,42 | 200 | 200 |
| 29 - 5M | B05M029 | 29 | 46,15 | 45,01 | 200 | 200 |
| 30 - 5M | B05M030 | 30 | 47,75 | 46,60 | 200 | 200 |
| 31 - 5M | B05M031 | 31 | 49,34 | 48,20 | 200 | 200 |
| 32 - 5M | B05M032 | 32 | 50,93 | 49,79 | 200 | 200 |
| 33 - 5M | B05M033 | 33 | 52,52 | 51,38 | 200 | 200 |
| 34 - 5M | B05M034 | 34 | 54,11 | 52,97 | 200 | 200 |
| 35 - 5M | B05M035 | 35 | 55,70 | 54,56 | 200 | 200 |
| 36 - 5M | B05M036 | 36 | 57,30 | 56,16 | 200 | 200 |
| 38 - 5M | B05M038 | 38 | 60,48 | 59,34 | 200 | 200 |
| 40 - 5M | B05M040 | 40 | 63,66 | 62,52 | 200 | 200 |
| 42 - 5M | B05M042 | 42 | 66,85 | 65,71 | 200 | 200 |
| 44 - 5M | B05M044 | 44 | 70,03 | 68,89 | 200 | 200 |
| 45 - 5M | B05M045 | 45 | 71,62 | 70,48 | 200 | 200 |
| 46 - 5M | B05M046 | 46 | 73,21 | 72,07 | 200 | 200 |
| 48 - 5M | B05M048 | 48 | 76,39 | 75,25 | 200 | 200 |
| 50 - 5M | B05M050 | 50 | 79,58 | 78,43 | 200 | 200 |
| 54 - 5M | B05M054 | 54 | 85,94 | 84,80 | 200 | 200 |
| 60 - 5M | B05M060 | 60 | 95,49 | 94,35 | 200 | 200 |
| 62 - 5M | B05M062 | 62 | 98,68 | 97,54 | 200 | 200 |
| 72 - 5M | B05M072 | 72 | 114,59 | 113,45 | 200 | 200 |