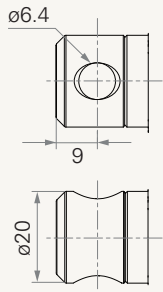
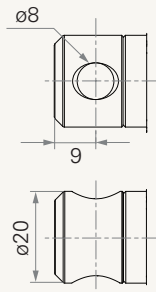


Front Attachment (mm)

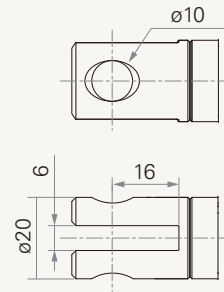
1 = Aluminum casting, hole 6.4



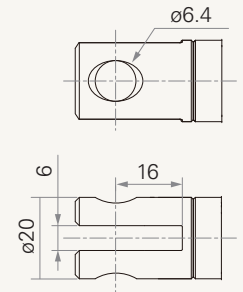
2 = Aluminum casting, hole 8.0



3 = Aluminum CNC, U clevis, slot 6.0, depth 16.0, hole 10.0



4 = Aluminum CNC, U clevis, slot 6.0, depth 16.0, hole 6.4



5 = Aluminum CNC, U clevis, slot 6.0, depth 16.0, hole 8.0

