

# L750 CIN

+135°  
-30°

PA6  
+G.F.

UL94  
HB

RoHS  
COMPLIANT

## INOX

### WINGNUT WITH STAINLESS STEEL FEMALE THREADED INSERT

**Material:**  
Reinforced polyamide.  
Oils and greases resistant.

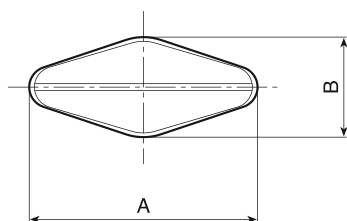
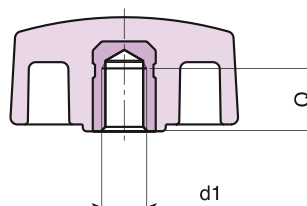
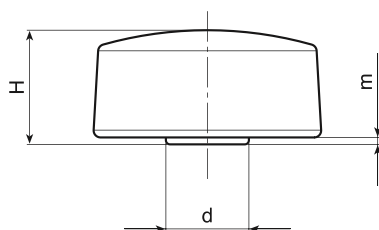
**Surface:**  
Satin.

**Colour:**  
Black (RAL 9011).

**Main Insert:**  
Stainless steel blind threaded bush (AISI 303).  
(tolerance 6H).

**SPECIAL REQUEST:**

- It is possible to supply colours as shown in the table at pag. L-31, on request and for quantities.



Art.	A	B	H	m	d	d1 6H	Q	g
L75032.TM0501CIN	33	15	16,5	1	12	M05	7	9
L75032.TM0601CIN	33	15	16,5	1	12	M06	7	8
L75032.TM0801CIN	33	15	16,5	1	12	M08	7	8
L75048.TM0801CIN	48	15	16	1	12,5	M08	7	8