

# H766



## KNURLED HOLLOWED HANDWHEEL WITH THREADED STUD

**Material:**  
Reinforced polyamide.  
Oils and greases resistant.

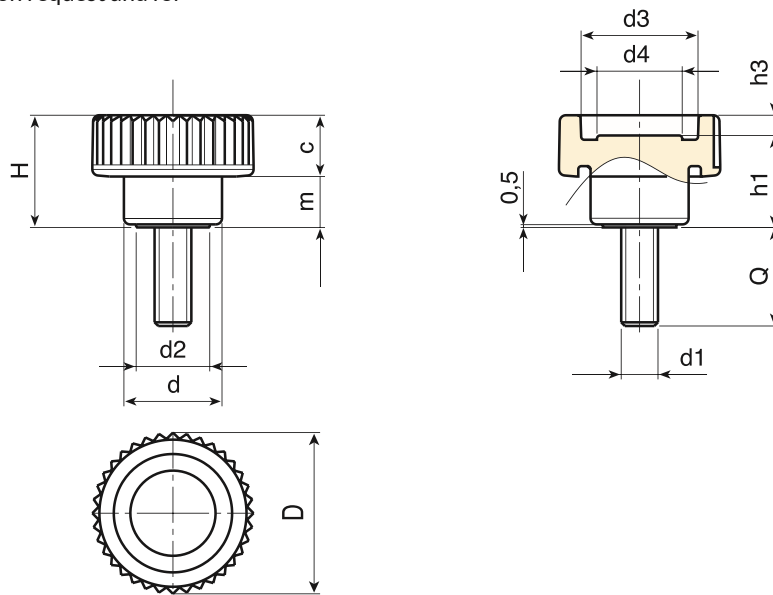
**Surface:**  
Satin.

**Colour:**  
Black (RAL 9011).

**Main Insert:**  
Zinc plated steel threaded stud (tolerance 6g).

### SPECIAL REQUESTS:

- It is possible to supply inserts in different lengths or by special design, on request and for quantities.
- It is possible to supply inserts in different materials, on request and for quantities.
- It is possible to supply colours as shown in the table on page H-23, on request and for quantities.



| art.             | D  | H    | d  | m    | c    | d2  | d3 | d4   | h1   | h3  | LM  | d1 6g | Q           | Δ g             |
|------------------|----|------|----|------|------|-----|----|------|------|-----|-----|-------|-------------|-----------------|
| H76615.TM04X..01 | 15 | 10,5 | 10 | 4,5  | 6    | 8   | 10 | 7,5  | 8,5  | 2   | 40  | M04   | 11-15-19    | 2,5-3-3,5       |
| H76615.TM05X..01 | 15 | 10,5 | 10 | 4,5  | 6    | 8   | 10 | 7,5  | 8,5  | 2   | 40  | M05   | 11-15-19    | 4-4,5-5         |
| H76621.TM05X..01 | 21 | 15   | 13 | 6,5  | 8,5  | 9,5 | 15 | 10,5 | 12,5 | 2,5 | 40  | M05   | 10-16-20-30 | 6,5-6,5-7,5-9,5 |
| H76621.TM06X..01 | 21 | 15   | 13 | 6,5  | 8,5  | 9,5 | 15 | 10,5 | 12,5 | 2,5 | 40  | M06   | 10-16-20-25 | 7,5-8,5-9-10,5  |
| H76626.TM06X..01 | 26 | 18   | 16 | 8,5  | 9,5  | 12  | 19 | 13   | 15   | 3   | 80  | M06   | 10-16-20-25 | 10-11-11,5-12,5 |
| H76626.TM08X..01 | 26 | 18   | 16 | 8,5  | 9,5  | 12  | 19 | 13   | 15   | 3   | 80  | M08   | 16-20-25    | 15,5-16,5-18,5  |
| H76633.TM08X..01 | 32 | 23   | 20 | 10,5 | 12,5 | 15  | 23 | 16   | 18   | 5   | 80  | M08   | 16-20-30    | 21-24-30        |
| H76633.TM10X..01 | 32 | 23   | 20 | 10,5 | 12,5 | 15  | 23 | 16   | 18   | 5   | 80  | M10   | 20-30-40    | 30-30,5-35,5    |
| H76640.TM08X..01 | 40 | 28   | 25 | 12,5 | 15,5 | 18  | 28 | 21   | 22   | 6   | 100 | M08   | 16-30-40    | 29,5-38-44      |
| H76640.TM10X3001 | 40 | 28   | 25 | 12,5 | 15,5 | 18  | 28 | 21   | 22   | 6   | 100 | M10   | 30          | 46              |
| H76640.TM12X5001 | 40 | 28   | 25 | 12,5 | 15,5 | 18  | 28 | 21   | 22   | 6   | 100 | M12   | 50          | 78              |
| H76640.TM14X..01 | 40 | 28   | 25 | 12,5 | 15,5 | 18  | 28 | 21   | 22   | 6   | 100 | M14   | A.R.        | -               |

Enter the stud length choice in the two .. of the article code. Lengths by request with 250 pieces minimum quantity.

**LM** = Maximum mouldable length.

**A.R.** = by request.